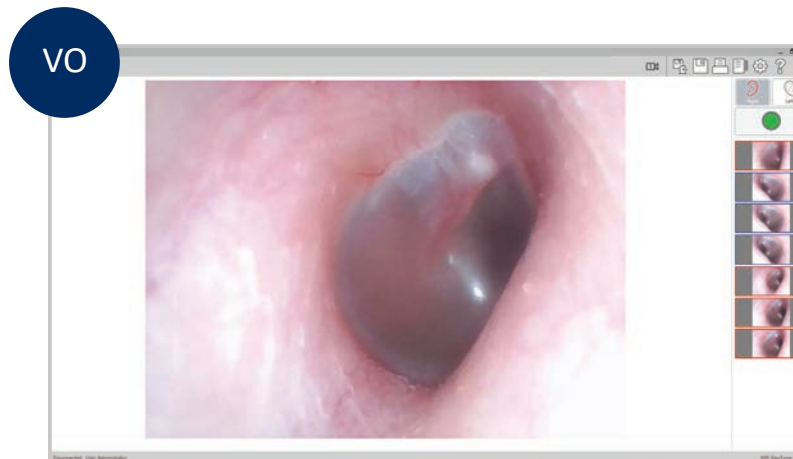




New Video Otoscope • New MedRx Studio Software



Simple to use and easy to customize for your clinic

Video Otoscope

Technical Specs

Model NO: U42M
Image Sensor: 1/10" High Color Sensor
Camera diameter: 4.2mm
Pixel Size: 2.25µm x 2.25µm
Specula: Heine 4mm
Effective Picture Element: 648(H)X488(V)
AGC: Auto
AES: Auto
AWB: Auto
Dynamic Range: 68dB
S/N Ratio: 37dB
Lens Construction: 1G +2P + IR
Lens F/NO: F3.8
Lens View Angle(Fov): Fov (D)60°+-5°
Depth of Field: 10mm – 30mm
Light Source: 6pcs High Luminous White Color LED
Power input: DC 3.6 ~ 5V
Output System: USB Output
Power Consumption: 0.5W
Operating Temperature: -10°C to +35°C
Operating Humidity: 30%~90%Rh
TV Distortion: < 5%

Otoscope Features

- User Friendly, USB Connection, Plug and Play Technology
- Capture, View and Store Digital Images
- Perform an Otoscopic Examination
- View the Probe Microphone Tube in the Ear Canal
- Clear and Sharp Images
- Conveniently Shows a List of Captured Pictures, Comments and Previews of the Selected Images
- NOAH™, TIMS, Blueprint OMS and Sycle Compatible
- An Integrated Video Module is Available in MedRx Software
- Ideal for Cerumen Management

MedRx®

Good Things Come In Small Packages

MedRx, Inc

1200 Starkey Rd. #105
Largo, FL 33771 U.S.A.
888-392-1234 • 727-584-9600
FAX: 727-584-9602
Email: sales@medrx-usa.com
www.medrx-usa.com

MedRx Minimum Computer Specs:

Windows® PC compatible computer, Intel™ i5 Dual Core, 2.0 GHz or better. 4 GB RAM. 20 GB free hard drive space. Available 2.0 USB port. Windows 7, 8 or 10 Professional (32 or 64-bit).



MX-05-DS-2

